



**SOULMATE**

**300M**



**2600 mAh | 7.5 Hrs Run Time**  
**400 M + Throw**  
**USB Rechargeable**  
**Full Aluminium Body**  
**Linear Drive**

**Feature Packed**

**BEYOND PERFORMANCE...▶▶**

**Made In India**

# Built with Mil Grade Aluminium Alloy

## Soulmate Pro is Rugged, Reliable and Easy to carry



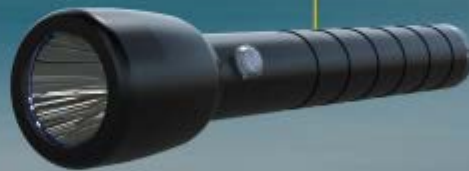
Silicon Switch Cap tested for 100000+ cycles  
Glow Red while Charging  
Glow Green after Fully Charged

High Performance Optics  
415 M+ Throw



USB Port Cover

USB Rechargeable Port



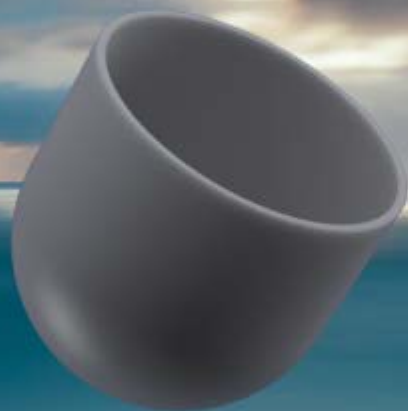
Full Aluminium Body  
CNC Machined for Perfection  
Hard Anodized for Scratch Resistance

Night Find : The Switch Cap Glows in Dark

# Your Flash Light is also an Led Bulb

Made of High Grade Silicon,

The Diffuser Comes as a Standard Accessory



Fits On  
Soulmate  
Soulmate Pro



**USB Port for easy Recharging**

**7.5 Hrs of Continuous Run Time**

**Schaff Custom Batteries for Longer Life**

## **Run Time Details :**

Power Saving Mode : 7.5 Hrs

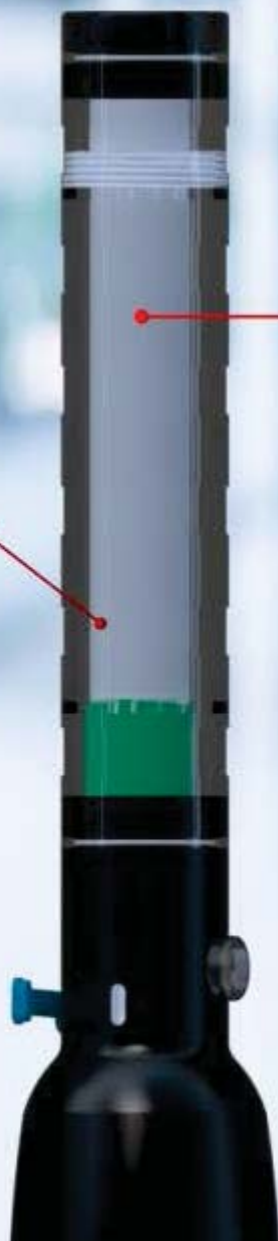
Performance Mode : 4 Hrs

Strobe : 4 Hrs

**Lithium Ion  
Battery**

**Hand Grip  
Dia 31 mm**

Length 194 mm  
Weight 285 Gms

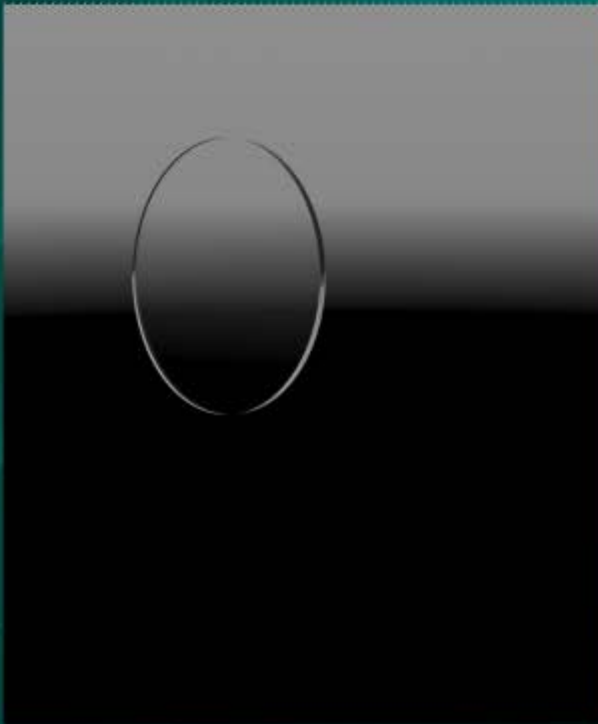




## **Constant Light Out Put**

**Get the Same Light Out put from Battery Full to end of Battery charge**

**No Dimming of Light as Battery Charge Decreases**



Front Glass by Shinkolite from Mitsubishi

**Shatter Free Front Glass For Ultra Clarity and Minimal Light Loss**



**Schaff HDV2 TMS**

**Schaff HDV2 Advanced Thermal Management System ensures Critical Electronic Components Perform with out fail**



Manufactured by Schaff Engineering  
Bangalore, India

<http://schaff.asia>  
[schaff.eng@gmail.com](mailto:schaff.eng@gmail.com)